

Imposition Publisher X Client-Server

© 1992-2009, Farrukh Systems Ltd.

This guide is a supplement to the manual that comes with Imposition Publisher. To find out how to use Imposition Publisher and its features please refer to the manual.

This guide covers the installation and running of the Client-Server version. It details the differences between this and the Standalone version of Imposition Publisher.

This guide is divided into the following sections:

What is Imposition Publisher Client-Server?	1
System Requirements	2
Installing and Running the Server on UNIX	3
Installing and Running the Server on Windows	7
Installing and Running Clients	8
Uninstalling Users	13

What is Imposition Publisher Client-Server?

The Client-Server version is a special version of Imposition Publisher where the work is shared between two computers connected over a network: the workstation (**Client**) and the central computer (**Server**) that performs most of the processing.

This method allows greater throughput of work for less cost. The Server machine is usually very powerful so that the processing of PostScript and PDF files is very fast, whilst the Client machine, which does not need to be so powerful, allow the user to set up and send jobs to the Server for processing.

At present, the Imposition Publisher X Server is available on Windows, Sun Solaris, Linux x86 and Mac OS X Server platforms. The Client is available only for Mac OS X.

The Client-Server version comes with a 5 user license, which allows 5 specific workstations to impose work. Should you need more than 5 licenses, contact your supplier to upgrade the software. This will only involve entering a new release code for the Server.

System Requirements

For the Server on Windows (Minimum):

- Pentium 500 MHz or faster
- 512 MB RAM
- Windows 2000, XP, Vista or later
- Sufficient hard disk space for input and output PostScript and PDF files

For the Server on Solaris (Minimum):

- Sparc 20 or later
- 512 MB RAM
- Solaris 2.4 or later
- Sufficient hard disk space for input and output PostScript and PDF files
- Helios EtherShare, Xinet or similar

For the Server on Linux x86 (Minimum):

- Pentium 500 MHz or faster
- 512 MB RAM
- Sufficient hard disk space for input and output PostScript and PDF files
- Helios EtherShare, samba, netatalk or similar

For the Server on Mac OS X Server (Minimum):

- G4, G5 or Intel based Mac
- 512 MB RAM
- Sufficient hard disk space for input and output PostScript and PDF files
- Mac OS X Server (10.3 or newer)
- Helios EtherShare or built-in file sharing services

For each Apple Macintosh Client (Minimum):

- 512 MB RAM
- 15 MB hard disk space to install
- Mac OS X (10.3 or newer)
- A connection to the Server over a network

Installing and Running the Server on UNIX

Note: In the examples given, the angle brackets (< >) denote text to be substituted by the user, as it may be site-specific.

Installation

The installation CD contains the UNIX software for Imposition Publisher Client-Server. The installation **.tar** file can be found inside the **UNIX Server** folder on the CD (select the appropriate platform). Copy this file to your UNIX server. Then change directory to **/usr/tmp**. Then type the following to extract the installation files from the **.tar** file.

```
tar xvf <name-&-path-of-the-.tar-file>
```

Then to install the software make sure you are in the directory that you extracted the tar files to. Then become root or superuser by typing :-

```
su
```

```
< enter password here if any >
```

Then type: -

```
./install_ips
```

The install script will ask you for:

1. An installation path. This is where the server software will be installed, inside a directory named ipserver.
2. The UNIX directory name and path, which maps onto the shared login Macintosh network volume. Make sure that the path you enter is correct, as otherwise the server software will not work.

Once you have answered these two questions the installation will start.

3. Once this is complete, you will be asked if you wish to create automatic start-up and shut down links. If you answer yes, the software will automatically be stopped and restarted when the machine is brought down and rebooted.
4. Next you will be asked if you received a dongle with your copy:-

If you answer **y** (for yes) to this question you will be asked if you want to run the dongle setup program. Again if you answer **y** (for yes) you will then be asked which serial port your dongle is attached to (**a** or **b**). Then you will be asked to enter your 12-digit dongle code and release code (you should have received these on a flyer with your dongle).

If you answer **n** (for no) to this question the software will print out a reference for your machine and ask if you have a password for this reference. At this point phone your supplier with your reference number and they will give you a password and release code in return. Then answer **y** (for yes) to the password prompt and enter your password including the dashes (-) and release code without dashes.

5. The next step is to setup the printers and volumes to be used with the Clients. If you are using any combination of EtherShare, PCShare, Xinet or UShare this can be done automatically. Just select the appropriate option on the Network Setup menu.

If you are using another networking solution select **Other...** from the menu option list and follow the instructions below to setup your printers and volumes.

Setting up Printers

The menu driven script (**setup-printers**) allows you to manually add or delete names from the list of printers seen by the clients and to specify a UNIX print command. When you print from a Client, the server software uses this command to print your output to a UNIX printer. It does this by adding the printer name and the output file to the UNIX print command.

For Example. Using Helios EtherShare printer queues, you can follow these steps for Imposition Publisher Server to print to these queues.

- a. Type the following command to list all EtherShare printer queues :-

```
<name-&-path-of-your-EtherShare-directory>/lpc stat
```

This will list all the EtherShare printer queue names and their associated status.

- b. Choose option 1 **Add a printer...** from the menu. Then type in the EtherShare printer names pressing RETURN after each. When you have finished press RETURN to return back to the menu screen.
- c. Choose option 4 **Configure print command...** from the menu. Then enter **y** and press RETURN to change the current UNIX printer command. Then enter the following and press RETURN :-

```
<name-&-path-of-your-EtherShare-directory>/lpr -P
```

- d. From the menu screen choose option 5 **Quit**.

Setting up Volumes

The menu driven script (**setup-volumes**) allows you to manually add or delete volume entries from the list of volumes seen by the Clients. Only those volumes that have been set up this way can be used with the Imposition Publisher Software.

To add a new volume you should select choice 1. You will be prompted for the UNIX path and the corresponding Macintosh name. All names are case sensitive. Changes are saved when you select choice 4 **Quit**.

Note: You will not be able to use the software until at least one volume has been set up.

6. Before finishing you will be prompted to search for Distiller. You should answer **y** if you want to preview PostScript files and have Acrobat Distiller installed on your UNIX server.

In the **ipserver/ip** folder the file **ippreview.cmd** will be created which will contain path to the Distiller. It is in the form **IPPREVTOOL=/usr/bin/distill**. If you wish you can edit it manually (e.g. in case you have multiple installation of the Distiller).

Note: If you don't have Distiller installed on the server, the Mac Client will perform the PostScript to PDF conversion.

Your Imposition Publisher Server software should now be installed and ready for use.

Starting the Server

The Server software on UNIX must be running before you run the Client software.

If the automatic startup option was selected on installation, the Server program will automatically start when you reboot your machine and will be stopped when your machine is shutdown.

However, if you wish to start it without rebooting, do the following:

1. Change directory to the **ipserver** directory. Type:

```
cd <my-installation-path>/ipserver
```

Note: the text <my-installation-path> denotes the install path you entered when you ran the installation script.

2. Type :-

```
./start-ipserver
```

or

```
./start-ipserver -DEMO
```

to start as demo. If you run the demo version you will be given a 12 digit demo key. Phone Farrukh Systems with this key, you will be given a release code that will last for a limited number of days. This key is invalidated if the software is shut down, but you can phone again for another release code. Other than this the demo mode is fully functional.

Note: When starting up a Macintosh client for the first time, you will be prompted to select the login folder on the server volume. This folder is called **iplogin** and will have been created by the server installation script.

Stopping the Server

If you need to shutdown the Imposition Publisher server without shutting down your machine do the following:

1. From the same directory, type :-

```
./stop-ipserver
```

or

```
./stop-ipserver -DEMO
```

if you are running as demo.

Miscellaneous

1. If you incorrectly type the UNIX path name for the shared Macintosh login volume in the installation, you can edit the **.ipconfig** file, as root, in the **ipserver** directory. The format is as follows :-

```
APPDIR=<ipserver directory path>
```

```
LOGINDIR=<iplogin directory path>
```

```
NETDIR=<directory path for the Mac network volume>
```

2. You can obtain your installation reference number at any time from the **ipserver** directory by typing, as root or superuser :-

./ipref

3. If you did not enter your password at the end of the installation script, you can do so from the **ipserver** directory, as root or superuser, by typing :-

./ippass enter

Next, type:-

./ippassrelease

to enter the release code.

4. If you have a problem entering your dongle code on installation then you can re-enter it from the **ipserver** directory, as root or superuser, by typing :-

./dngsetup -DNGNUMONLY

5. You can update your list of volumes and printers after installation from the **ipserver** directory, as root or superuser, by typing :-

./config_net

Installing and Running the Server on Windows

Installation

1. Insert the installation CD into your computer's CD drive.
2. In **Windows Explorer** view the contents of the CD. Navigate to the **Imposition Publisher\ClientServer\Windows** folder. Double click the file **IPXServerWin.exe**. This will launch the installation program.
3. Follow the instructions given by the installation program. During the installation you will be given the opportunity to change the location where the software is installed.
4. When the installation is complete, Imposition Publisher Server will be on the **Start Menu** and a shortcut will appear on the Desktop.

Dongle Driver Installation

Before you can run Imposition Publisher Server, the driver for the dongle must be installed on your Windows system. This should happen automatically on the first run.

If the automatic driver installation is unsuccessful, you should try the dongle driver manual installation. Follow the instructions in the file **ReadMe.txt** in your Imposition Publisher Server directory.

Running Imposition Publisher Server for the First Time

When you first run Imposition Publisher Server, a dialog will appear prompting you to enter your dongle number, release code, and the path of the shared directory.

1. Make sure that the dongle you received with this copy is connected to the parallel/USB port.
2. Start Imposition Publisher Server from the Start button or the Desktop shortcut.
3. In the Install dialog, enter your 12 digit dongle number and release code. (The numbers will be printed on a separate flyer).
4. In the same dialog, enter the path of your network shared directory in the box provided.

E.g. The shared directory to enter would be **D:** if all of the D: drive files and directories could be seen from the network volume on your Client machines. The iplogin folder will be created as **D:\iplogin**.

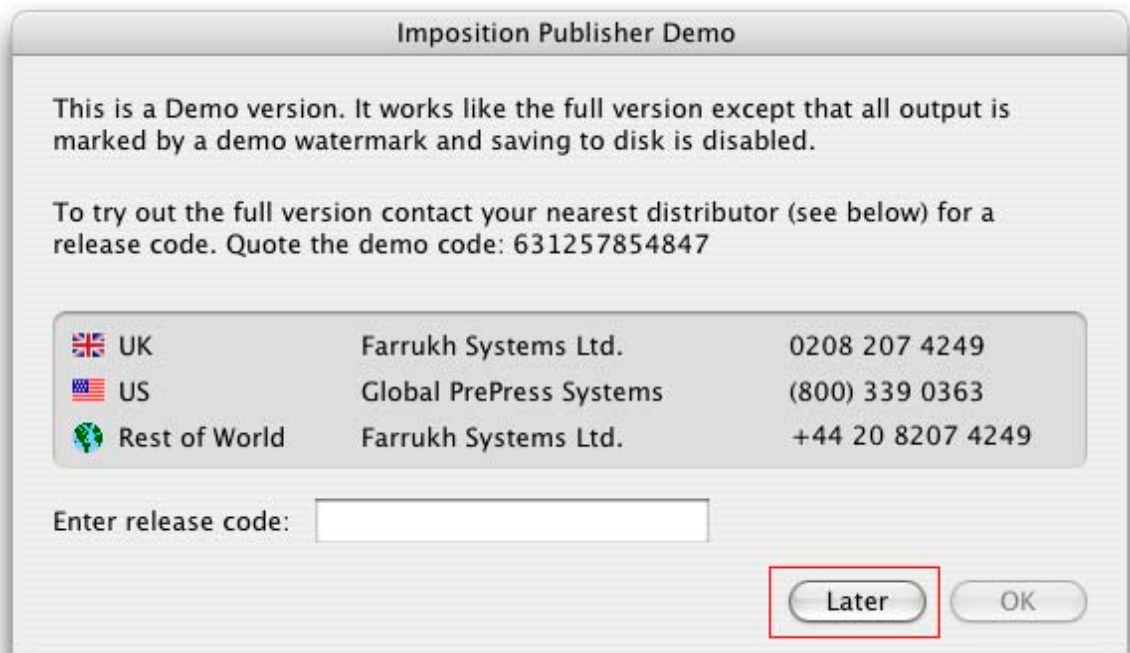
5. Click **OK**. The Imposition Publisher Server main window and startup screen should appear.

Next time you start the **Imposition Publisher Server** the software will start up straight away without prompting for this information.

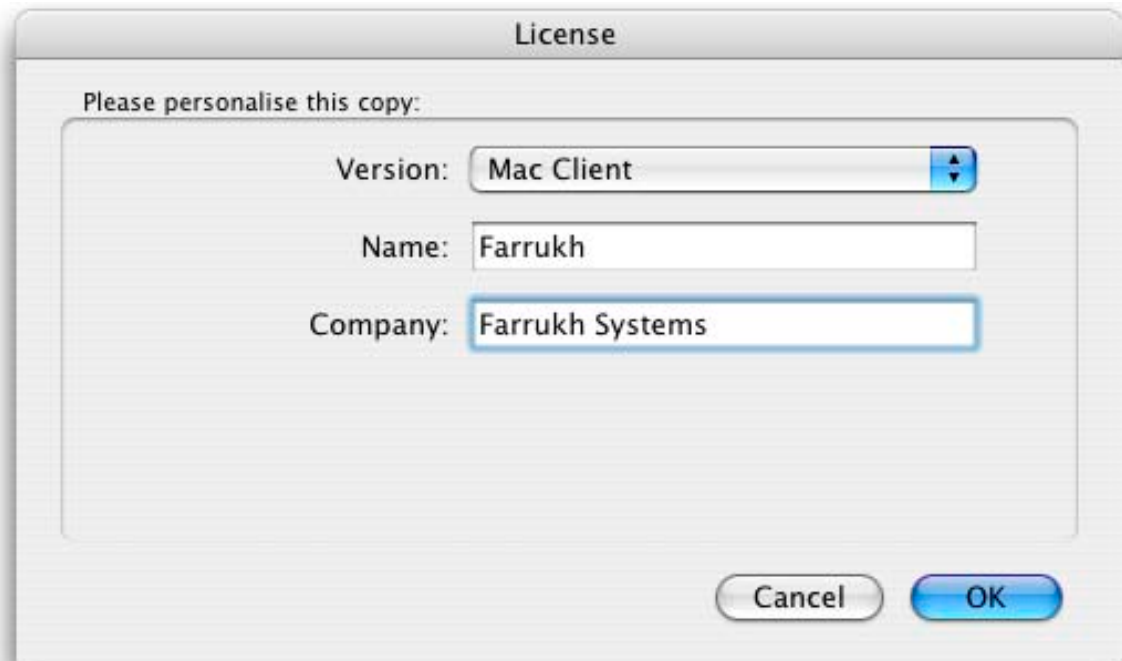
Note: If you make a mistake when specifying the network shared directory, the Server software will start up, but the clients will be unable to login. If this happens choose **Reset Installation** from the **Edit** menu. The next time you start the server program the Install dialog will appear. Then you will be able to enter the correct shared volume path.

Installing and Running Clients

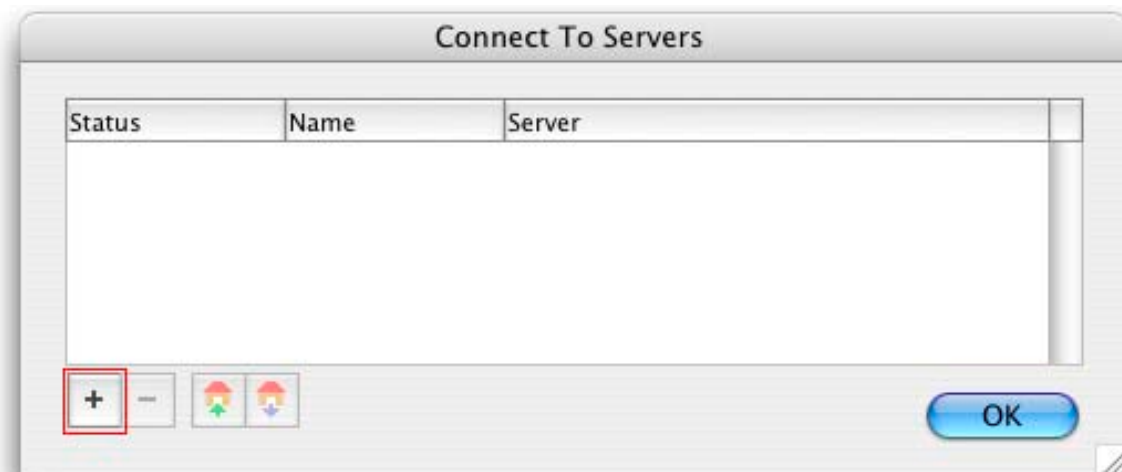
1. Before installing and running Imposition Publisher Clients, make sure the Server is installed and running.
2. Make sure you are able to *see* the server volumes on your Client machine.
3. Install Imposition Publisher Client on your workstation. Refer to the ReadMe file for further details on how to install Imposition Publisher.
4. Run Imposition Publisher. Dismiss the Demo warning by clicking Later.



5. From the Edit menu, select **License**. You will be prompted to personalise your copy. Enter your name and company. Change the Version popup to **Mac Client**. You do not have to enter a Dongle Number or Release Code for the Client software.



6. Click **OK**. The Connect to Servers dialog will appear:

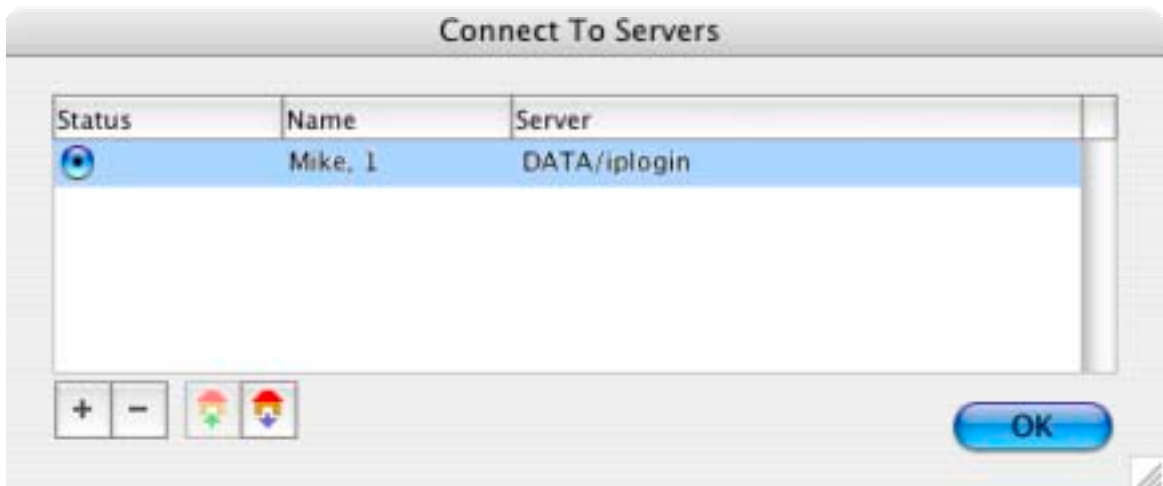


8. Click the **plus (+) button**. You are then prompted to login to a Server:



9. Click **Browse** and navigate to the network shared volume and select the **iplogin** folder (this folder is created by the Server on its first run). Then click **Connect**. If you have logged in

successfully, there will be a black dot inside the radio button. Click **OK** to dismiss the Connect To Servers dialog.



10. The **Connect To Servers** dialog allows you to log onto multiple Servers, if required. Click **OK** to complete the login procedure.

Now you are logged in, you are ready to go.

Note: The next time you run Imposition Publisher, logging onto the Server will be automatic.

If there are any problems installing or logging onto the Server

If the Server is unable to log you in, then check the following:

- Try repeating steps 5-11.
- The Server part is actually running.
- The Server's volume is accessible to the Client. For the **Mac** it should be on your Desktop.
- The correct login folder has been selected.
- A correct login name has been supplied. If the name is already in use you will need to enter another name and try again.
- If the number of users logged onto the Server has reached the limit allowed by your user license, then you will not be allowed to login. You will need to uninstall one of the other users (See below for how to do this).

If nothing seems to work then contact your supplier or Farrukh Systems directly. (See the Imposition Publisher manual for how to get Technical Support).

Using the Client-Server Version

Imposition Publisher Client-Server version is almost identical to the standalone version in terms of operation. For information on how to use the features of Imposition Publisher please refer to the online help and the manual.

However, there are a few differences:

1. File Locations

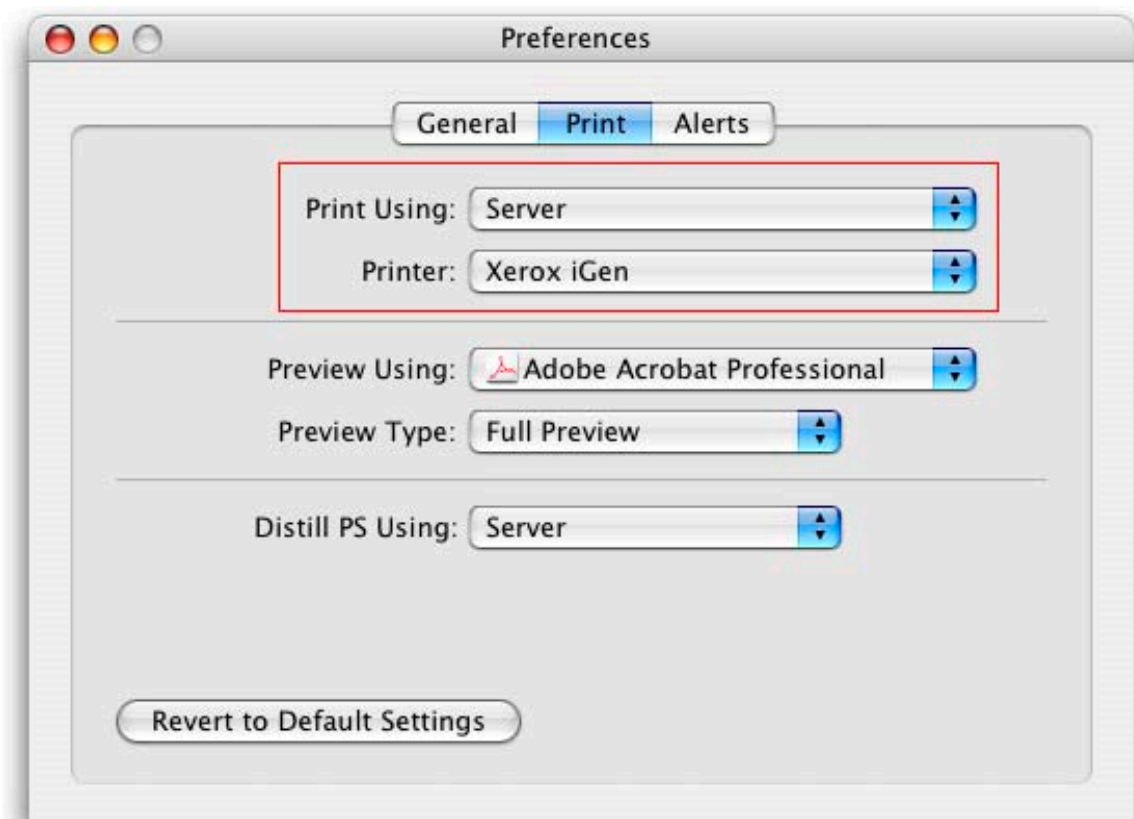
The following files **must** be on the server, as the Server is unable to access files on the Client machine:-

- All input PostScript and PDF files
- All output PostScript and PDF files
- All EPS and PDF files used in custom print marks
- Any PostScript or PDF files you want to download using Imposition Publisher

Every time you add files to a file list or print a job, a message is sent to the Server which then performs the relevant task.

2. Printing

The Print dialog on the Client displays a list of server printers. The printer that appears by default can be set in the Client's Preferences dialog:

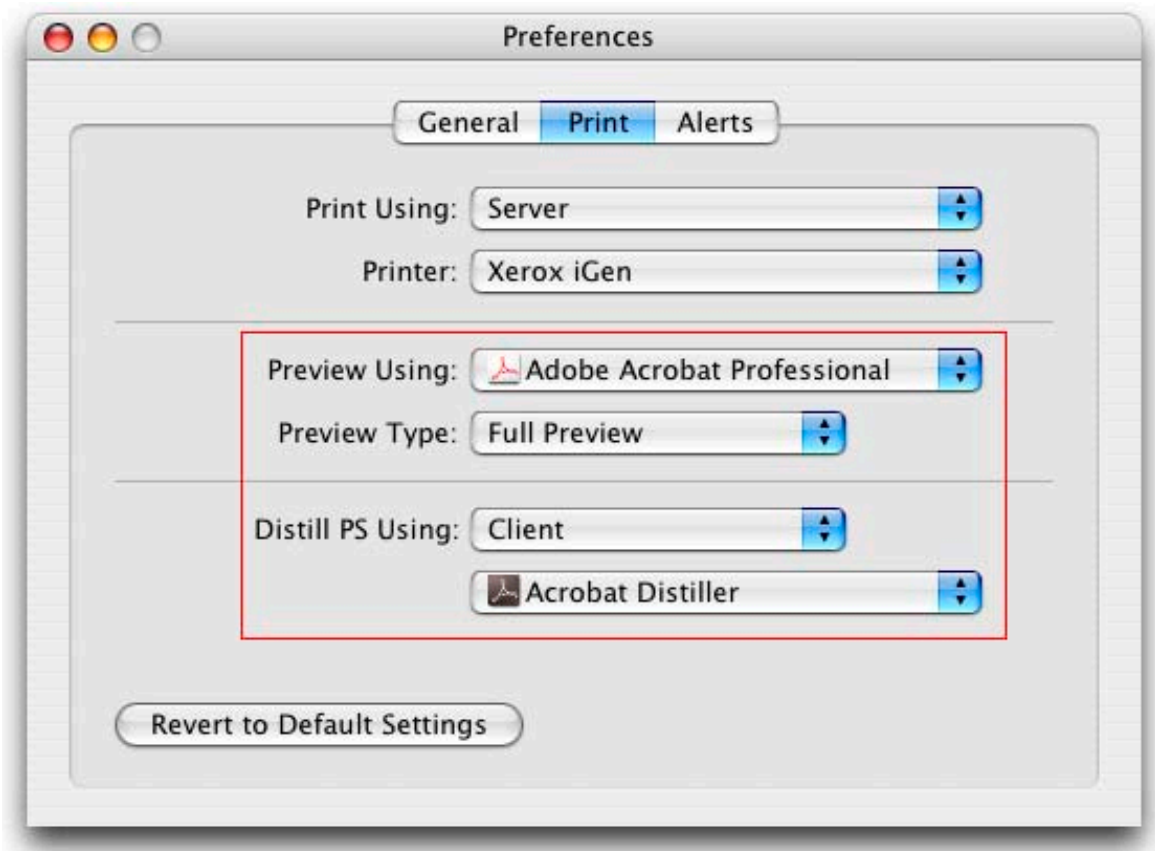


3. Downloading Files

The **Download to Printer...** option in the File menu downloads files through the Server. The files have to be on one of the server volumes. Files are downloaded to the default printer, specified in the Preference dialog.

4. Previewing

To preview PostScript files you can use a copy of Adobe Acrobat Distiller on the server or you can choose to let each client convert PostScript into PDF. Previewing PDF jobs does not require Distiller. The client displays the preview PDF files, either using the built-in Preview application or Acrobat, according to the Client Preferences.



In the installation directory on the Windows server there is a text file **Distillr.dat** which contains the path to the Distiller application. You can edit this path manually if you have multiple installations of the Distiller or you reinstall Distiller to a new location.

Uninstalling Users

From the Client

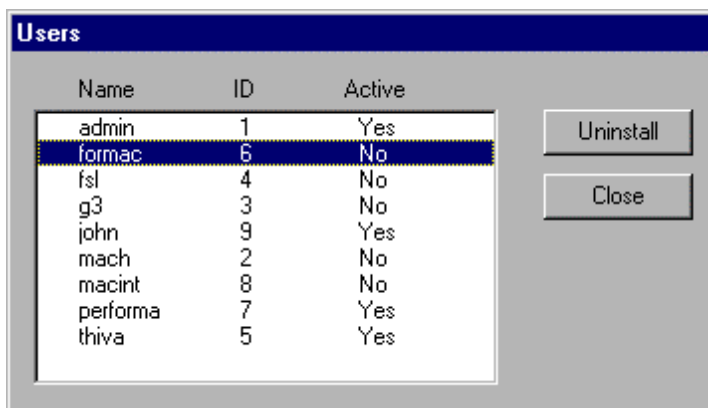
A user can uninstall themselves from a Server to free their slot on the Server. You can only uninstall a user if they are currently logged onto the Server.

To Uninstall a User

1. From the Client software, select **Connect to Servers...** from the **Edit** menu.
2. Click on the minus (-) button to remove that client's license on the server
3. The Server will be removed from the list and the vacant slot will be available for another user to log in.

From the Windows Server

1. From the Server software, select **Users...** from the **Edit** menu.
2. The **Users** dialog will show a list of all the users. Select the user that you want to uninstall and click **Uninstall**. Note that only currently logged out users can be uninstalled from the server.



3. The User will be removed from the list and the vacant slot will be available for another user to log in.