

Imposition Publisher™

Quick Start Guide



*The total solution to
electronic imposition*



IMPOSITION PUBLISHER QUICK START GUIDE

INTRODUCTION	3
Minimum System Requirements	3
INSTALLATION	4
Macintosh Standalone Installation	4
Windows Standalone Installation	4
Running the Software	5
YOUR FIRST IMPOSITION	6
Loading PostScript Files	6
Selecting Your Imposition	7
Printing:	8
- Selecting Print Marks	9
- Setting Up Your Output Device	10
- Printing Your Job	11
Quitting Imposition Publisher	13
Getting The Best Results	13
IF YOU NEED HELP	14
If All Else Fails	15

INTRODUCTION

Imposition Publisher™ is designed to impose PostScript and PDF files quickly and simply. Its comprehensive functionality allows you to get the most out of your imagesetter or Computer-to-Plate (CTP) system.

There are 2 products covered in this booklet - Imposition Publisher Studio standalone versions for Macintosh or Windows.

A multi-user Client Server version is also available for Windows NT, Mac OSX and UNIX which has the same Macintosh and Windows client user interface. Installation of the Server software is not covered in this booklet. Please see the PDF file documentation on the accompanying CD for information on installing the Server software.

To install, follow the instructions relevant to your product. There is a simple imposition exercise to introduce some of the features of Imposition Publisher. This is relevant for all versions.

Note: The accompanying CD contains the required software. The folders are arranged logically with each different product having its own folder.

Minimum System Requirements

Macintosh	<ul style="list-style-type: none">• Mac or PowerMac running System 8.1 or higher.• RAM 32 MB• Disk Space equal to the size of files to be imposed
Windows	<ul style="list-style-type: none">• Intel Pentium or compatible running Windows 95 or NT• RAM 32 MB• Disk Space equal to the size of files to be imposed

INSTALLATION

Macintosh Standalone Installation

It is assumed that you are familiar with running software on a Macintosh.

Firstly, attach the dongle to the ADB chain or USB port, for example between the keyboard and the computer. Restart your machine.

1. Insert the Imposition Publisher CD into your Macintosh computer.
2. Open the folder named Workstation, then the folder named Mac.
3. Open the folder corresponding to the language you want.
4. Double click the file IP Installer to install the program. Follow the instructions from the installer. The programs and related files are installed in a folder called Imposition Publisher on your hard disk.

Windows Standalone Installation

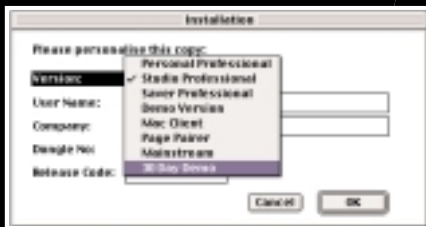
It is assumed that you are familiar with running software on a Windows PC.

First attach the dongle to a parallel port on the back of your PC. To access the dongle, a device driver has to be installed in your Windows system. This will happen automatically the first time you run Imposition Publisher.

1. Insert the Imposition Publisher CD into your computer.
2. Open the folder named Workstation, then the folder named Windows.
3. Open the folder corresponding to the language you want.
4. Run the program **SETUP.EXE**.
5. Follow the prompts given by the installation program. A new item Imposition Publisher will be added to the Programs folder.

Running The Software

1. **Mac Version:** Double click the Imposition Publisher icon.
Windows Version: Select **Imposition Publisher** from **Programs** on the **Start** Button. If necessary, the program will automatically install a device driver for the dongle. You may be asked to restart your computer. Run Imposition Publisher again.
2. The Install dialog should appear:
 - i) Select the Version in the pull down menu.
 - ii) Enter your Dongle Number (not needed with the Demo version).
 - iii) Enter your Release Code. You will find these numbers printed on a separate sheet. (also not needed with the Demo version).
3. Enter your name and company name if required.
4. Click OK. The splash screen should appear. Imposition Publisher is now successfully installed and running.



Note: The next time you run Imposition Publisher, it will start up without showing the Install dialog.

Now you are ready to make your first imposition.

YOUR FIRST IMPOSITION

This short exercise demonstrates some of the basic functionality and ease of use of Imposition Publisher. This exercise is designed for a 4-up imagesetter or CTP system but the principles are the same for an 8-up device.

Loading PostScript Files

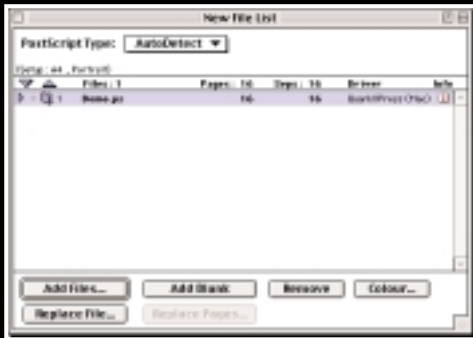
Any files you want to impose have to be loaded into a File List.

1. From the **File** menu, select **New File List...** The **New File List** dialog appears.

2. Click **Add Files**. A **File Open** dialog appears allowing you to navigate your file system to the folder containing the PostScript files to be imposed.

Select the file *Demo.ps* in the *Examples* folder for this exercise.

The Examples folder is in the same folder as the Imposition Publisher program.



Note: When you come to create your own PostScript files, always create them with crop marks or registration marks turned on.

PostScript files created this way contain more information and Imposition Publisher is able to extract this information automatically. This saves you from entering it manually. The crop marks or registration marks put in by your DTP software will be removed from the files and replaced by marks you select in Imposition Publisher.

3. Click **Open**. Imposition Publisher checks the file and extracts important information like page size, orientation, etc. This process may take a few moments but then the file name will appear in the File List. Also displayed is the total number of pages found in the file. Further information about the file can be seen by clicking on the *Info* icon to the right of the file name.

Selecting Your Imposition

Next you need to open the imposition (signature) you want to use. Imposition Publisher comes with a large number of built in impositions. You are going to use one of the built in impositions, although it is easy to create an imposition from scratch.

1. From the **File** menu, select **Open...**
2. Navigate to the *Imposition Publisher* folder. Open the folder called *Impositions*. Three folders are visible - BPIF, Custom and Stahl. Open the folder called *Custom*.
3. Select the imposition named *4up_ss.imp*. Click **Open**.

This 4-up imposition should appear.

Pages 1, 8, 4 and 5, are on the first block.

Pages 2, 7, 3 and 6 are on the second block.

Note: This is a saddle-stitched imposition. This means that when each printed sheet is folded up into a section, the sections fit inside each other. All impositions are independent of page size and the actual number of

pages in the job. So this imposition can be used for an 8 page A3 job, a 32 page A4 job or a 128 page A5 job. This is very flexible as it saves you from having to create lots of impositions for different jobs.

For the purpose of this exercise, the job is ready to print. However, there are many features in Imposition Publisher tailored for production. These include the ability to compensate for creep and bottle, adjust trim values for gutters, add printer's marks and precisely adjust their positions.

Printing

Imposition Publisher offers you control and flexibility when it comes to outputting your imposed job. From the **Print** dialog, you can easily change your output device, print mark set and imagesetter or CTP device, simply by changing the appropriate pull down menu. All the main print settings are easily accessible.



Other options are set in the **Print Options** dialog, accessed from the **Options...** button.

If you have Adobe Acrobat Distiller™ and Reader™ or Exchange™, you can use the **Preview** feature to view your output before sending the job to your imagesetter or CTP device.

Selecting Print Marks

Imposition Publisher comes with a comprehensive set of standard printer's marks. Any non-standard or special mark can be imported using the **Custom Marks** feature. Imposition Publisher makes it easy to save regularly used sets of print marks and easily specify any set at print time.

1. From the **File** menu select **Print**. Click the **Print Marks...** button. The **Print Marks** dialog appears.

2. Select the options you want from this dialog, or copy the settings shown in this example.

3. Click **Save Set As...**

4. Enter *Demo Marks* as a name for this set of marks and click **Save**.

You have just created a print mark set.

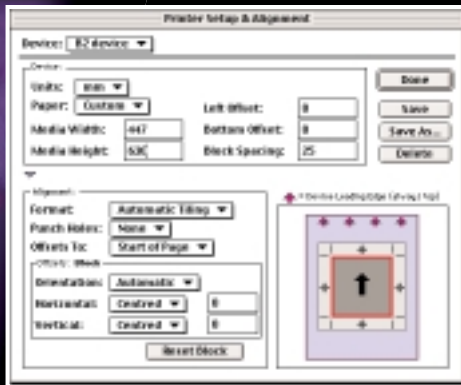
5. The **Print Marks** dialog reappears. Click **OK**. The set appears in the **MarkSet** pull down menu in the Print and Print Marks dialog. You can create as many different sets as you need and change between them whenever you print.



Setting Up Your Output Device

When you print you may need to specify precisely the alignment and orientation of the imposition on your imagesetter or CTP device. You must ensure that Imposition Publisher knows the correct device size and alignment settings.

1. Select **Print...** from the **File** menu. The **Print** dialog should appear.



2. Select **Printer Setup...** The **Printer Setup & Alignment** dialog appears.

3. In the **Media Width** box, enter the imaging width of your output device.

4. In the **Media Height** box, enter the imaging depth of your output device.

Note: The dimensions you enter here are not your actual film or plate dimensions, but the maximum image area dimensions of your device. If you get a *rangecheck* error

from your RIP when you print, the most likely cause is that you have set one or both of these values too high.

5. Click **Save As...**

6. Enter a suitable name for this device setup (eg. B2 imagesetter) and click **Save**. You have just created a printer device setup for use with your output devices.

7. The **Printer Setup** dialog box reappears. Click **OK**.

Windows Standalone: Select a PostScript output device from the **Printer** pull down menu. These printers correspond to the devices available in Print Manager.

Note: If you are using an OPI server, you should impose the job first. Select the input queue of your OPI server as the printer for Imposition Publisher. or use Imposition Publisher's **Print to File** option to create a file in the appropriate drop folder.

3. Check that the **Device** pull down menu displays the name of the device setup you created above.

If not, select this name from the Device pull down menu. If it does not appear here, you need to repeat the Device Setup to ensure correct positioning and alignment of your output.

4. Select a print marks set from the **Mark Set** pull down menu. You can check and alter the print marks by clicking **Print Marks...** and then saving any changes you make.

5. Click **Print**. The required pages are imposed and sent to the chosen output device.

The pages should come out fully imposed from your imagesetter or CTP system. If you have any problems check for any error messages from your RIP. The most common mistake is a rangecheck error, caused by one or both media dimensions being entered incorrectly in the **Printer Setup** dialog. If you get any other error then please contact your supplier or Farrukh Systems directly. The contact details are at the end of this booklet.

Quitting Imposition Publisher

1. To exit the client program, select **Quit** (or Exit) from the **File** menu.
2. To exit the server program, first check that there are no other clients logged onto the server. Then select **Exit** from the **File** menu.

Getting The Best Results

You will probably want to test some of your own files through the software. Here are some useful tips:

1. Always create your PostScript files with crop marks or registration marks. This allows Imposition Publisher to automatically extract more information from the PostScript file. This means less work for you and guaranteed accuracy for better results.
2. Include your fonts in the PostScript file. Imposition Publisher can handle embedded fonts (including TrueType) and will adjust them automatically so you don't unexpectedly get output in Courier. There is no need to have all the fonts on your server. This makes life much easier if you receive files from other companies or departments.
3. When working with an OPI system, do the imposition first. This means you are working with smaller PostScript files, speeding up the whole process. The software works both pre and post OPI.
4. Imposition Publisher works with both composite and colour separated files. If you want to output colour separated plates, then you need to create colour separated files from your DTP software or use the colour separation capabilities of your RIP.

5. Use the **Preview** option while you are getting the hang of the software to save media. You will need Acrobat Distiller and Acrobat Reader or Exchange on your workstation.
6. The PostScript produced by DTP programs like QuarkXPress, PageMaker, Microsoft Word is continually changing, due to software upgrades, new operating systems and printer drivers. You should visit our web site regularly and download the latest drivers, to ensure you are fully up to date. Just put the new drivers into the *Drivers* folder. The Drivers folder is in the same folder as the Imposition Publisher program.

IF YOU NEED HELP

A full help facility is available from the client program. Select **Imposition Publisher Help** from the Help Menu on the main menu bar.

Extensive, up to date documentation for Imposition Publisher is provided on the CD in Adobe Acrobat PDF format. You can download the free Acrobat Reader from Adobe's web site (www.adobe.com) if you do not already have a copy of Acrobat Exchange or Reader installed on your machine.

If All Else Fails

Contact your supplier or Farrukh Systems Technical Support Department who will be able to solve your problem.

email fsupport@farrukh.co.uk

Web Page www.farrukh.co.uk

	Telephone	Fax
UK & Worldwide	+44 208 207 4249	+44 208 207 5992
Germany	+49 7333 922 090	+49 7333 922 091
USA	1 800 601 6907	
Canada	1 800 867 5083	



Imposition
Publisher™

FARRUKH SYSTEMS

Clarendon House • 125 Shenley Road • Borehamwood • Herts WD6 1AG • UK
Tel: +44 208 207 4249 • Fax: +44 208 207 5992 • Email: sales@farrukh.co.uk •
<http://www.farrukh.co.uk>